

MODERN BLAST FURNACE (BF) AND CONVERTER (BOF) GAS CLEANING – A REPORT OF STATE-OF-THE-ART TECHNOLOGY

BY

FRANZ REUFER* and
CHRISTIAN DAVIDI**

SYNOPSIS:

Since almost 15 years Paul Wurth Umwelttechnik GmbH in Essen/Germany is dedicated to BF and BOF gas cleaning. The technology developed, applied, and improved over the years is the so-called annular gap scrubbing technology. This wet gas cleaning technology in combination with our patented axial cyclone development (dry gas cleaning stage) represents a very efficient gas cleaning concept. The axial cyclone is removing up to 85 % of the dust in the BF gas. Compared to a standard dust-catcher, which is still the main dry dust separation stage in the chain of BF gas cleaning, it is a significant increase in dust separation and leads to a minimized amount of dust separated in the wet stage. Less water consumption, higher energy output with a BF top gas expansion turbine (TRT) operation, and less valuable BF dust which has to be dumped are the logic consequences of this gas cleaning arrangement. The annular gap scrubbing technology is also adapted to BOF gas cleaning. The application of this technology results in sustainable cost savings and reduces significantly the environmental impact. The dry dust can be recycled via the sinter plant. The zinc fraction of the blast furnace gas which shall not be recycled to the blast furnace will be removed in the annular gap scrubber.

Keywords: Environmental Technology, BF Gas Cleaning, Annular Gap Scrubber, Axial Cyclone, BOF Gas Cleaning,

* Managing Director, PAUL WURTH Umwelttechnik GmbH, Essen, Germany

** Head of Gas Cleaning Department, PAUL WURTH Umwelttechnik GmbH, Essen, Germany

1. Introduction

The development of a modern gas cleaning technology started in year the 1970 with the first installation of an annular gap scrubber in Arbed steel plant Esch-Belval in south of Luxembourg.



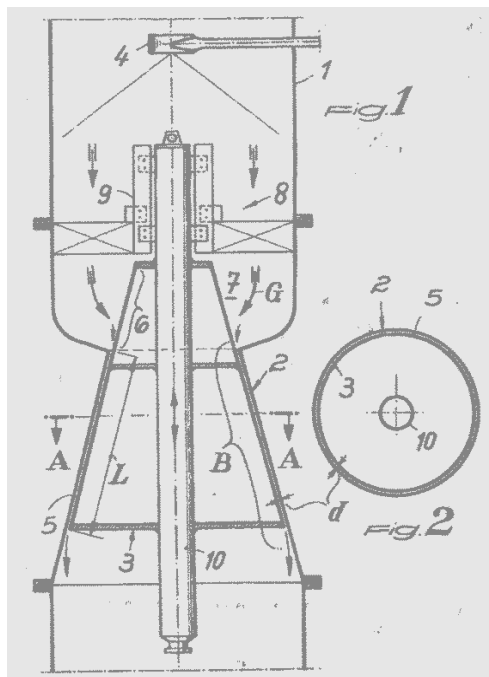
Figure 1: BF A and BF B Arbed Esch-Belval, Luxembourg, 1970

Since that time the technology was improved by Paul Wurth over the years based on customer needs and operational requirements. Design studies and process calculation in combination with the intensive exchange between operational and maintenance personnel lead to the actual design. Today the state-of-the-art gas cleaning technology consists of an axial type cyclone, annular gap scrubber with external swirl type demister.



Figure 2: Gas Cleaning Plant
AHMSA BF 6, 2010

In the early 1970s most of the new and revamped blast furnaces were operated under higher pressure to increase the operational results. Due to this fact it was necessary to adapt the gas cleaning system in a way that beside the cooling and cleaning of the BF gas also the top gas pressure control function was enabled. The very common venturi scrubbers were not able to fulfill this function, and only in combination with an additional septum valve it was possible to ensure this pressure control. The combination of a venturi with internal movable cone, the so-called annular gap element, evolved into the ideal solution for the BF gas cooling, cleaning, and top pressure control. High velocity inside the annular gap between the dust particles and injected droplets ensure the optimum separation of even finest particles. The shape of the inner cone and outer venturi generates the possibility to make the top pressure control more precise compared to the old system with septum valve. Nowadays, most of the BF in the world are operating this system to achieve optimum BF top pressure control and cleaning to ensure the highest productivity of the blast furnace.



2. BF dry and wet gas cleaning stage

In 1999 Paul Wurth was able to take the next step for another improvement of the gas cleaning technology. The first installation of an axial type cyclone was made at ArcelorMittal Bremen at BF No. 2. The axial cyclone substitutes the dust-catcher technology. It was possible to increase the separation of dust in the first gas cleaning step and to decrease the amount of sludge from the water treatment system of the following wet cleaning step.



Figure 3: Gas cleaning plant ArcelorMittal Bremen BF 2, 1999

The cyclone technology with tangential inlet was proven technology in several industrial fields and the main idea was to combine the advantage of the high dust separation of the cyclone with the structural advantages of a dust-catcher. With the axial inlet of the dust-catcher it was possible to lead all the loads and forces coming from the down-comer pipe into the structure of the dust-catcher. With a tangential cyclone it would be necessary to install an additional supporting structure so that these loads and forces can be compensated. The PW axial cyclone combined both, high separation efficiency and structural advantage. At the inlet of the axial cyclone, guide vanes are installed which produce the circumferential velocity of the gas to ensure the high separation efficiency of the dust. These guide vanes can be installed and maintained from the outside where a platform ensures optimum accessibility.

Since 2008 another improvement was made by re-designing the inlet section of the axial cyclone. The two large inlet ducts required a certain height, and the shape of the bumped head was often difficult to fabricate if the necessary machines for bending were not available. The new conical inlet section is much easier to fabricate and the height is reduced by 8 m. The separation efficiency of the cyclone will not be changed by this modification, but the weight and also the cost will be reduced by approx. 20 %. This new design is now in operation since spring 2012 for first time at BF 4 of SSAB Oxelösund, Sweden.

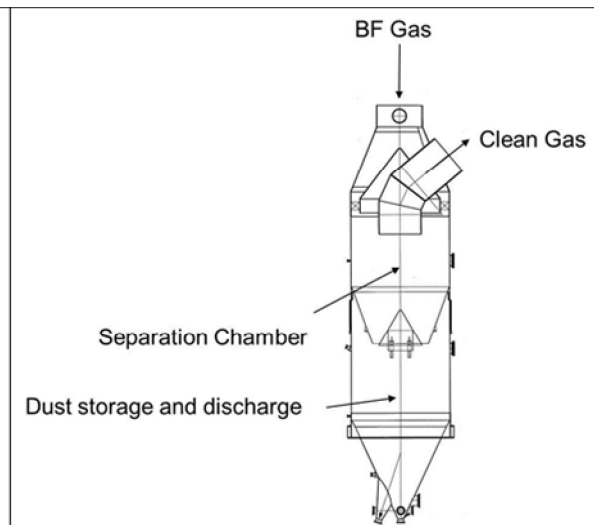
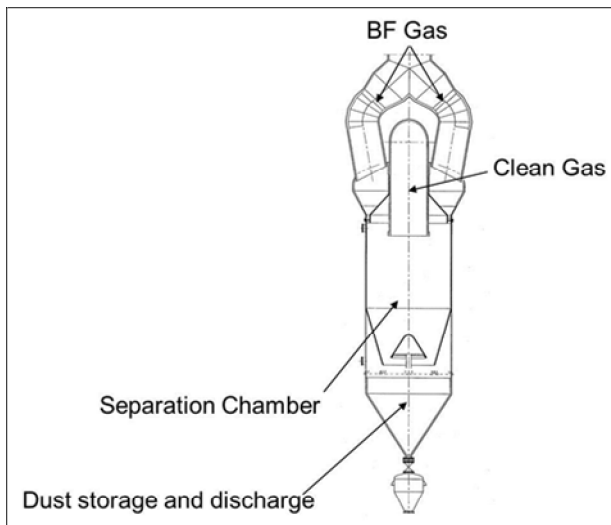


Figure 5: PW axial cyclone with inlet y-joint

Figure 6: New conical inlet section



The higher separation of dust inside the cyclone is linked to the centrifugal forces and high circumferential velocities inside the cyclone compared to the dust-catcher technology. The higher velocities inside the vessel require a special protection of the surfaces inside the vessel. A dust-catcher is very often operated without any protection of the inner surfaces due to the low gas velocity, but the cyclone technology requires a protection of these surfaces in order to avoid wear.

The first installation in Bremen was entirely equipped with ceramic tiles which ensure in general long operational time, but made problems with high temperature fluctuation of the gas.

Wear lining concrete based on high amount of Al_2O_3 in combination with ceramic tiles at the appropriate locations are the proven solution for this application. High temperature fluctuation can be compensated and the abrasion resistance is high enough to ensure long operation time. Installed by qualified personnel of the supplier, the material will last up to one BF campaign.

Since 1999 PW installed more than 30 cyclones which fulfill the customer needs to decrease the overall operational cost by improving productivity and lower material cost. Compared to the dust-catcher operation it is possible to separate up to 85 % of the dust in the cyclone. The design of the cyclone is made in a way that only the particles which are not linked to Zinc and Lead are separated from the BF gas. These particles which are harmful for the blast furnace refractory are still transported to the wet cleaning step and will be separated there from the circulation.

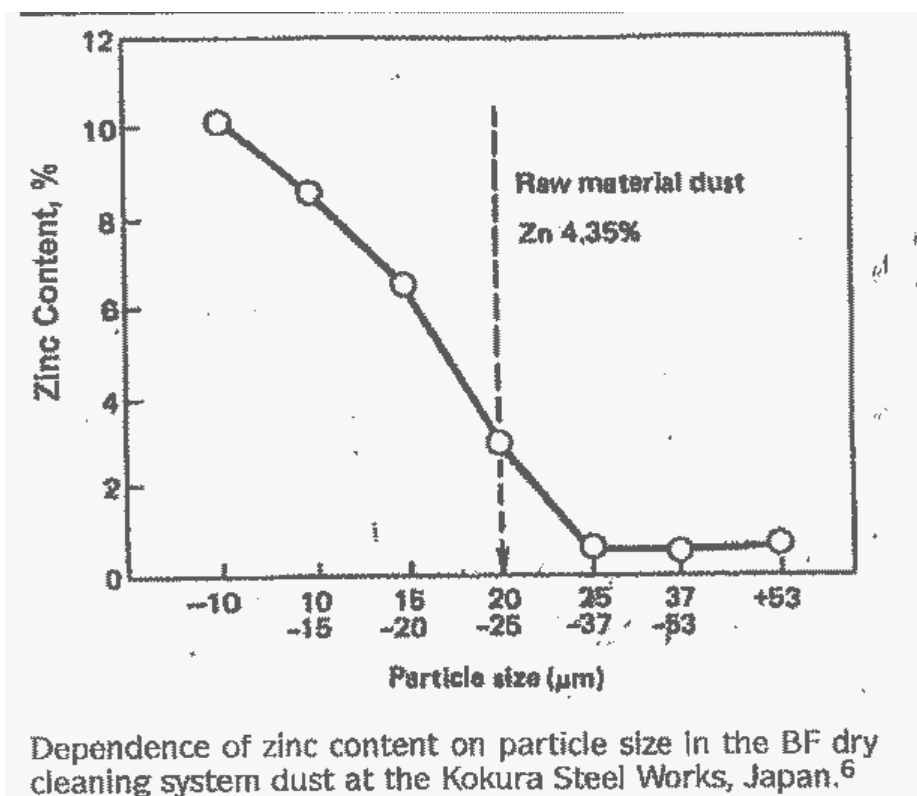


Figure 4: Dependence of Zinc content on particle size

Compared to a dust-catcher the shape of a cyclone is much thinner and smaller. This decreases the cost for the supporting structure and the foundation in case of a new installation or makes it possible to re-use the existing steel structure in case of a brown field installation. In both cases, the smaller diameter of the cyclone decreases also the

ЧЕМА ОБЪЕДИНО ЕДИНАКА

1 - 1

2 - 2

3 - 3

4 - 4

5 - 5

6 - 6

7 - 7

8 - 8

9 - 9

10 - 10

11 - 11

12 - 12

13 - 13

14 - 14

15 - 15

16 - 16

17 - 17

18 - 18

19 - 19

20 - 20

21 - 21

22 - 22

23 - 23

24 - 24

25 - 25

26 - 26

27 - 27

28 - 28

29 - 29

30 - 30

31 - 31

32 - 32

33 - 33

34 - 34

35 - 35

36 - 36

37 - 37

38 - 38

39 - 39

40 - 40

41 - 41

42 - 42

43 - 43

44 - 44

45 - 45

46 - 46

47 - 47

48 - 48

49 - 49

50 - 50

51 - 51

52 - 52

53 - 53

54 - 54

55 - 55

56 - 56

57 - 57

58 - 58

59 - 59

60 - 60

61 - 61

62 - 62

63 - 63

64 - 64

65 - 65

66 - 66

67 - 67

68 - 68

69 - 69

70 - 70

71 - 71

72 - 72

73 - 73

74 - 74

75 - 75

76 - 76

77 - 77

78 - 78

79 - 79

80 - 80

81 - 81

82 - 82

83 - 83

84 - 84

85 - 85

86 - 86

87 - 87

88 - 88

89 - 89

90 - 90

91 - 91

92 - 92

93 - 93

94 - 94

95 - 95

96 - 96

97 - 97

98 - 98

99 - 99

100 - 100

101 - 101

102 - 102

103 - 103

104 - 104

105 - 105

106 - 106

107 - 107

108 - 108

109 - 109

110 - 110

111 - 111

112 - 112

113 - 113

114 - 114

115 - 115

116 - 116

117 - 117

118 - 118

119 - 119

120 - 120

121 - 121

122 - 122

123 - 123

124 - 124

125 - 125

126 - 126

127 - 127

128 - 128

129 - 129

130 - 130

131 - 131

132 - 132

133 - 133

134 - 134

135 - 135

136 - 136

137 - 137

138 - 138

139 - 139

140 - 140

141 - 141

142 - 142

143 - 143

144 - 144

145 - 145

146 - 146

147 - 147

148 - 148

149 - 149

150 - 150

151 - 151

152 - 152

153 - 153

154 - 154

155 - 155

156 - 156

157 - 157

158 - 158

159 - 159

160 - 160

161 - 161

162 - 162

163 - 163

164 - 164

165 - 165

166 - 166

167 - 167

168 - 168

169 - 169

170 - 170

171 - 171

172 - 172

173 - 173

174 - 174

175 - 175

176 - 176

177 - 177

178 - 178

179 - 179

180 - 180

181 - 181

182 - 182

183 - 183

184 - 184

185 - 185

186 - 186

187 - 187

188 - 188

189 - 189

190 - 190

191 - 191

192 - 192

193 - 193

194 - 194

195 - 195

196 - 196

197 - 197

198 - 198

199 - 199

200 - 200

201 - 201

202 - 202

203 - 203

204 - 204

205 - 205

206 - 206

207 - 207

208 - 208

209 - 209

210 - 210

211 - 211

212 - 212

213 - 213

214 - 214

215 - 215

216 - 216

217 - 217

218 - 218

219 - 219

220 - 220

221 - 221

222 - 222

223 - 223

224 - 224

225 - 225

226 - 226

227 - 227

228 - 228

229 - 229

230 - 230

231 - 231

232 - 232

233 - 233

234 - 234

235 - 235

236 - 236

237 - 237

238 - 238

239 - 239

240 - 240

241 - 241

242 - 242

243 - 243

244 - 244

245 - 245

246 - 246

247 - 247

248 - 248

249 - 249

250 - 250

251 - 251

252 - 252

253 - 253

254 - 254

255 - 255

256 - 256

257 - 257

258 - 258

259 - 259

260 - 260

261 - 261

262 - 262

263 - 263

264 - 264

265 - 265

266 - 266

267 - 267

268 - 268

269 - 269

270 - 270

271 - 271

272 - 272

273 - 273

274 - 274

275 - 275

276 - 276

277 - 277

278 - 278

279 - 279

280 - 280

281 - 281

282 - 282

283 - 283

284 - 284

285 - 285

286 - 286

287 - 287

288 - 288

289 - 289

290 - 290

291 - 291

292 - 292

293 - 293

294 - 294

295 - 295

296 - 296

297 - 297

298 - 298

299 - 299

300 - 300

301 - 301

302 - 302

303 - 303

304 - 304

305 - 305

For the discharge of a high amount of dust separated inside the cyclone it is necessary to have an automatic and very reliable dust discharge system. Below the cyclone the dust discharge will be made by means of an intermediate hopper and two automatic PW GRITZKO valves. The intermediate hopper works as a lock vessel where the dust will be purged and pressure reduction takes place before it will be discharged to a pugmill with water spray. This ensures the emission free discharge of the dust into a rail truck or a lorry.

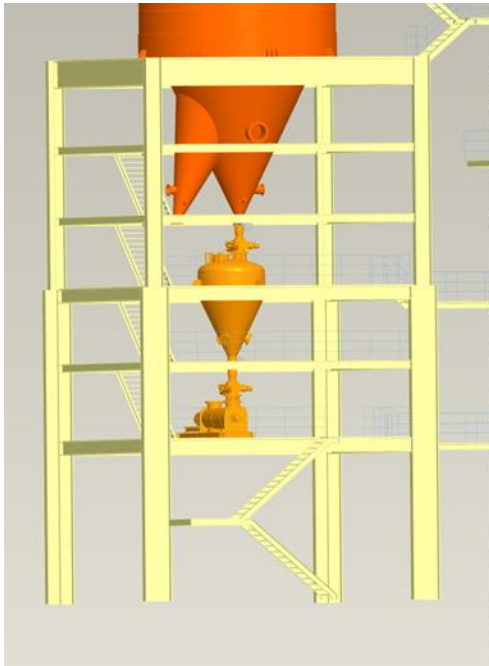


Figure 10: Dust discharge system



Figure 6: PW GRITZKO Valve for dust discharge

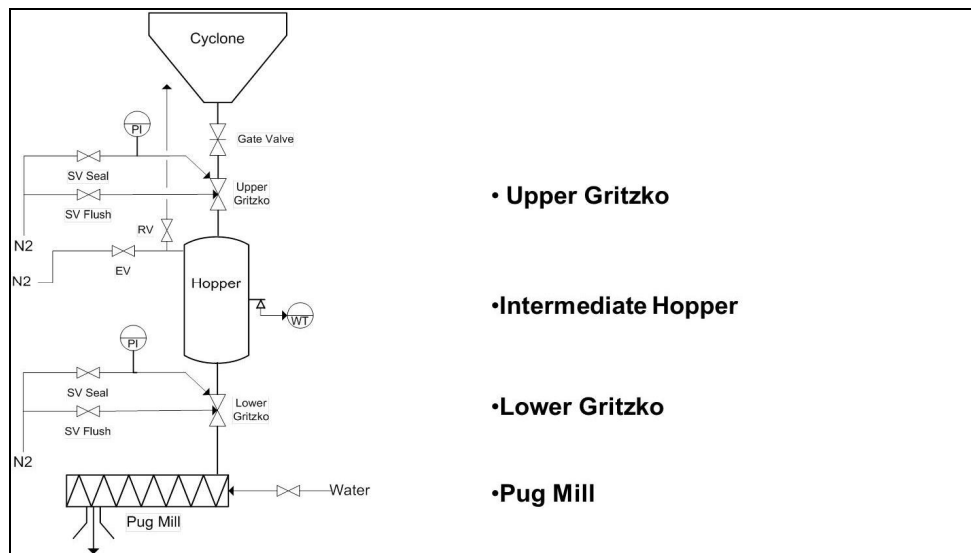


Figure 12: Schematic dust discharge system

The higher separation of dust is not only an advantage for the dry cleaning step. If less dust enters the following wet gas cleaning step, less accretions and wear can be expected. Longer lifetime of all parts of the scrubber or water treatment plant can be expected which will reduce the cost for maintenance and spare parts.

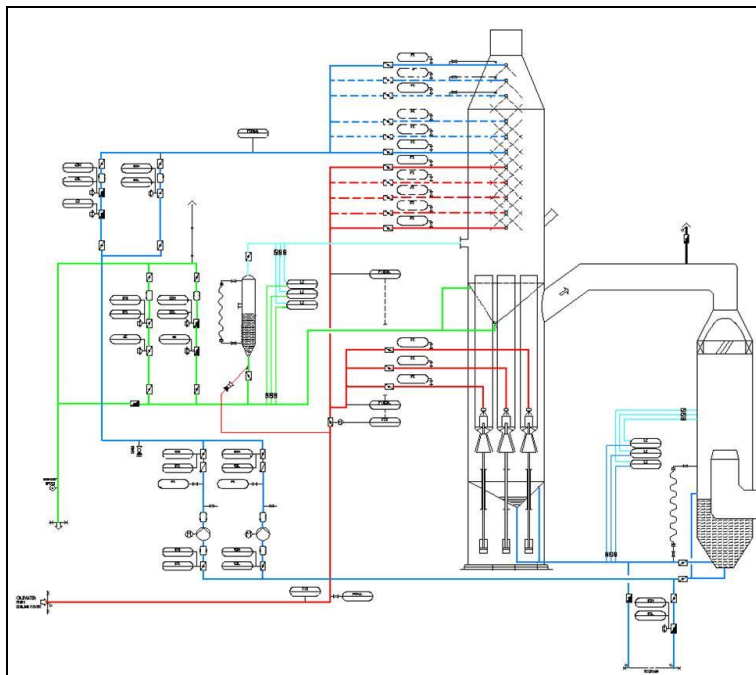


Figure 13: Water Circuit Wet Gas Cleaning Step

In case of the operation with an axial cyclone it is possible to reduce the amount of injected water to the wet scrubber system. The water consumption required for the cleaning of the gas can be reduced by approx. 20 %. The lower amount of water enables the installation of a smaller thickener at the water treatment plant or to increase the retention time in case of an existing system. This will help to reduce the investment and operation cost.

The reduction of injected water will influence the cooling process of the gas and will increase the gas outlet temperature. In case that the gas will pass a top gas recovery turbine (TRT) it is possible to generate approx. 2 % higher energy output.

To summarize the benefit of the installation of an axial cyclone for the complete gas cleaning system, the operational costs for a medium size blast furnace are listed hereafter (Tab. 1).

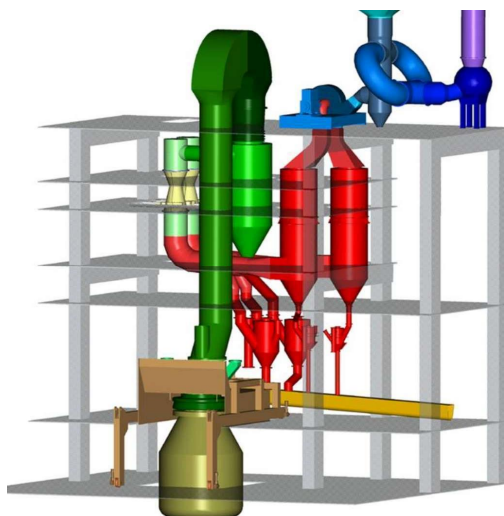
BF data				
Top gas volume flow	[Nm ³ .h]	550.000		
Top pressure	[bar,g]	2,5		
Top gas temperature	[°C]	150		
Yearly operation	[days]	340		
		GCP with Dust-catcher	GCP with Axial-Cyclone	Savings
				["/year]
Dust Inlet content	[g/m ³ i.N]	15	15	
Efficiency	[%]	50	85	

Material to sinter plant	[g/m ³ i.N]	7,5	12,75	
Benefit	[" /t]	25	25	589.050
Amount of sludge	[g/m ³ i.N]	7,5	2,25	
Landfill	[" /t]	5	5	117.810
Required cleaning water	[m ³ /h]	1000	800	
Gas outlet temperature	[°C]	45	48	
Energy output TRT	[MW]	13,8	14,1	73.440
Energy cost	[" /kWh]	0,03	0,03	
			Total	780.300

Table 1: Operational cost comparison dust-catcher vs. axial cyclone

3. BOF Gas Cleaning

The wet scrubbing technology on the basis of annular gap elements is not only state-of-the-art for blast furnace plants, but also applicable for basic oxygen furnace plants (BOF converter). In this case, the converter gas, which is generated by oxygen blowing process, is cleaned. The dust particles are removed from the gas flow significantly below dust concentrations of 50 mg/m³ (STP). The difference to blast furnace gas cleaning is that the BOF gas is not continuously produced but with a higher temperature, only during the blowing period. The pressure drop necessary for the gas cleaning is generated by a fan which sucks the gas through the scrubber and demister. The converter gas is a high calorific gas and is normally stored in a gas holder for further processing or for heating purposes inside the steel mill. A typical 3D-scheme of a BOF converter primary gas cleaning is shown in Fig. 14. The arrangement shows a plant which is installed at BOF shop 1 at ArcelorMittal Gent/Belgium. Three further installations (for three BOF converters) are actually under construction at the Arcelor-Mittal Temirtau works in Kazakhstan (Fig. 15,16).



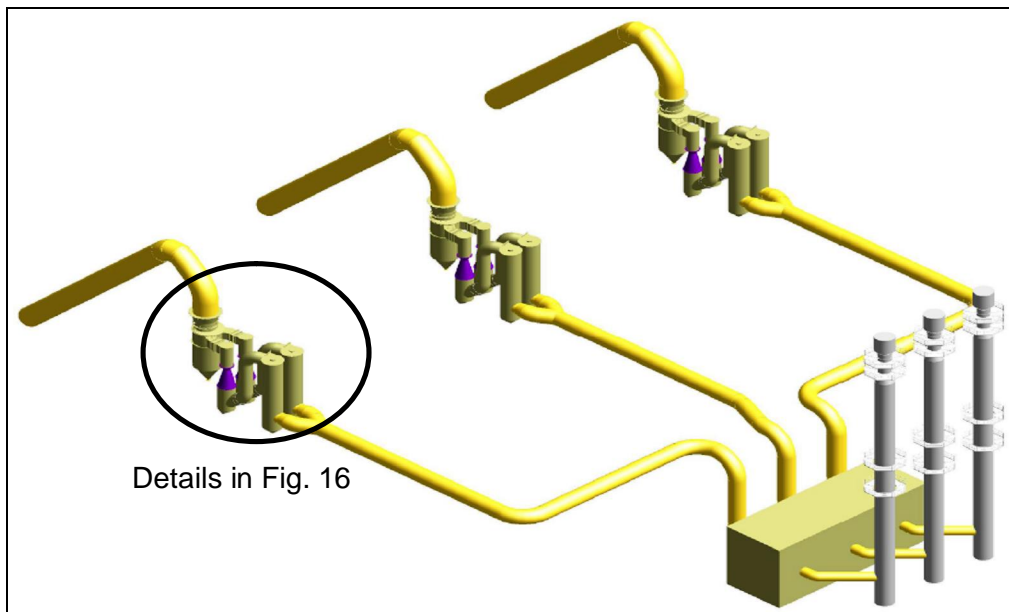


Figure 15: BOF gas cleaning of ArcelorMittal steel plant, Temirtau works, Kazakhstan

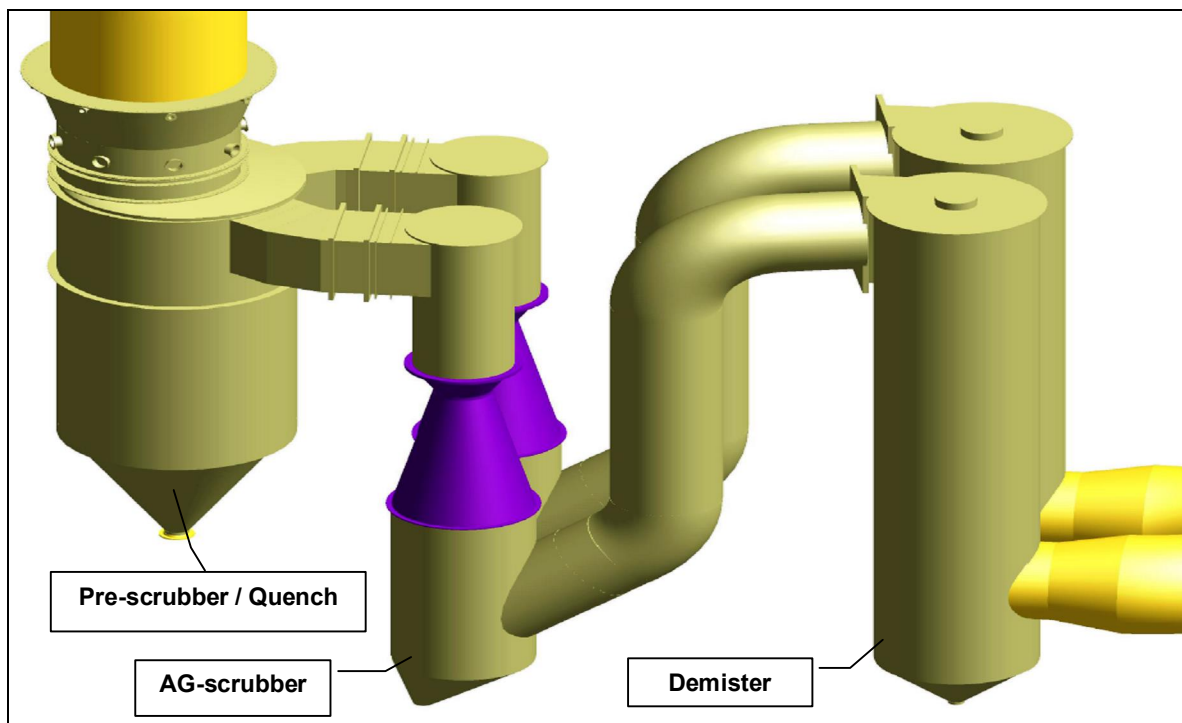


Figure 16: Plant items of the new AMT Kazakhstan Steel plant dedusting facility

These three new BOF primary dedusting facilities will lead to a significant improvement of the environmental situation of the whole steel works. In a final step the BOF gas could be collected in a gas holder in order to improve the energy balance of the steel works (3 x 300 t converters with a gas cleaning capacity of 166.000 m³/h (STP) each).

4. Conclusion

Gas cleaning facilities based on the annular gap technology are widely spread over the world. In the recent 15 years Paul Wurth Umwelttechnik installed almost 100 gas cleaning systems for BF and BOF operations which are fulfilling the given emission limits and contribute to a clean environment. The main advantages of this gas cleaning technology compared to other options are that there is a high flexibility and a wide range of possible inlet gas temperatures, corrosive gas components like chlorides and similar will be washed out with the water and are consequently no longer harmful to any kind of downstream installation or even to the ambiance. The annular gap technology is the ideal pressure control equipment for all sizes of blast furnaces. Both, gas cleaning and pressure control with the same plant equipment was a real breakthrough in the past.

A major gas cleaning step in particular for the blast furnace gas cleaning is the dry gas cleaning step based on the axial cyclone technology. The introduction of this kind of dust separation equipment has offered a real step forward in recycling of blast furnace dust back into the hot metal production chain and consequently has contributed to the reduction of water consumption and dumping of the residual dust. Furthermore, it has been shown that an axial cyclone can save significantly operation cost by the recycling of the dust (iron and coke/coal carrier), reduction of water consumption, and an increased energy output if operating an expansion turbine (TRT).